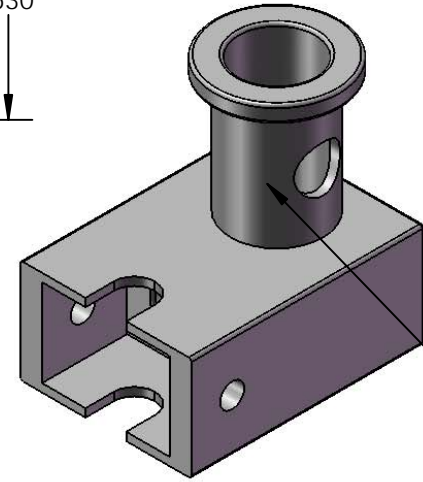
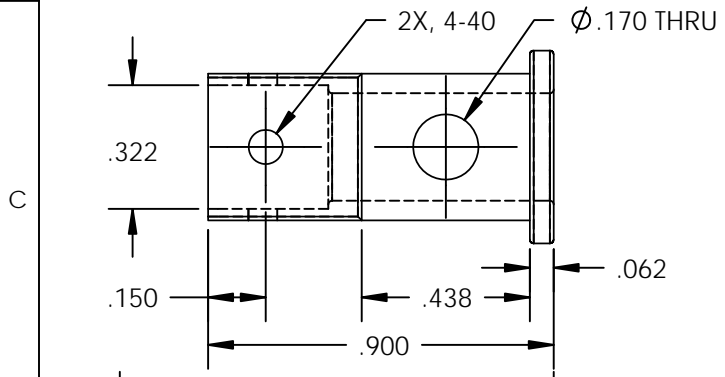
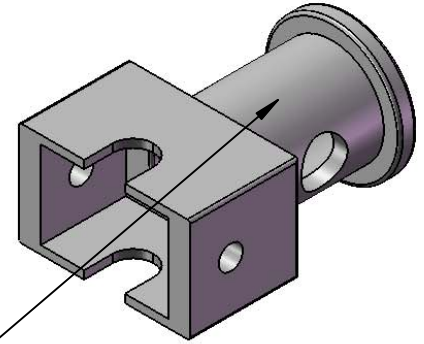


REVISION HISTORY			
REV	DESCRIPTION	DATE	APPROVED
A	Complete Assembly	10/21/10	

- NOTES:
- FROM MANUFACTURE ASSEMBLY INCLUDES:
QTY (1) ADAPTER.
QTY (2) 4-40 ALLEN STYLE SET SCREW.
 - BANDING SURFACE KNURL STYLE IS MFR OPT.
 - ISODYNE TO PROVIDE SPRING BAND.
 - MATERIAL ALUMINUM ALLOY: 6061-T6.
 - DRAWING IS SUPPORTED BY ELECTRONIC SOLID MODEL, DRAWING IS NOT FULLY DIMENSIONED.

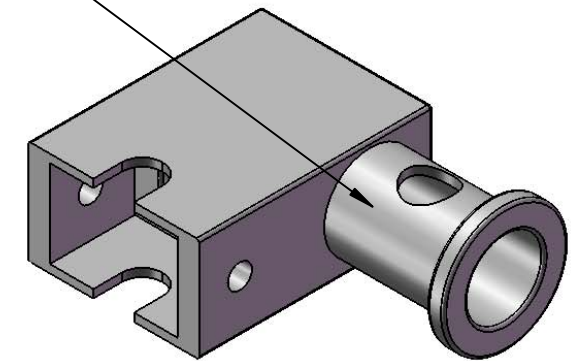
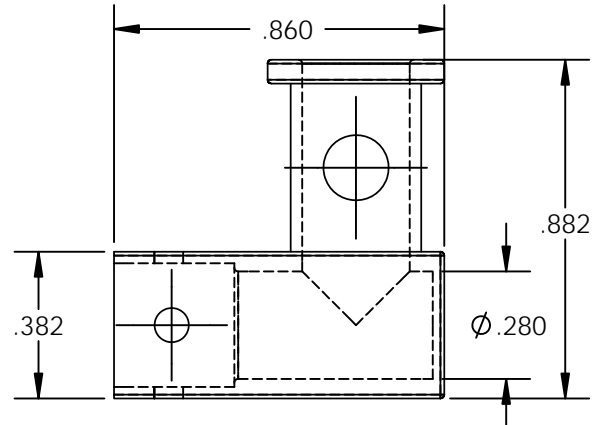
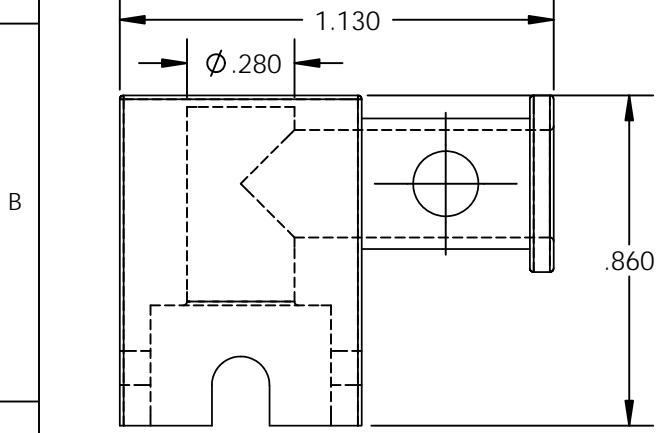


SIDE



TOP

NOTE 2



END

A P/N BREAKOUT: ISO RJ45 NF T
 ISODYNE IDENT _____
 BASIC PART NUMBER _____
 FINISH _____
 ANGULAR FUNCTION _____
 T=TOP S=SIDE E=END

MATL FINISH
 (NF) CAD/OD OVER ELECTROLESS NICKEL (500 HR. SALT SPRAY)
 (M) ELECTROLESS NICKEL

	NAME	DATE
DRAFTER	acarter	10/21/10
TOLERANCE: {UNLESS OTHERWISE NOTED}		
2 PLACE DEC ± .030		
3 PLACE DEC ± .015		
ANGULAR = ± 2°		
UNLESS OTHERWISE SPECIFIED DIMENSIONS ARE IN INCHES		

7706 E. OSIE - WICHITA, KS. 67207
 www.isodyneinc.com
ISODYNE PART NUMBER:
ISORJ45
 U.S. PATENT # 5,769,665
 CAGE CODE # 031M6